



European Institute of  
Innovation & Technology


The EIT is a body of the European Union



# Making Innovati on Happen

An online workshop  
EPPN Workshop  
San Sebastian, 5  
November 2019





WE POWER INNOVATORS  
AND ENTREPRENEURS  
TO DEVELOP INNOVATIVE  
SOLUTIONS TO GLOBAL  
CHALLENGES AND CREATE  
GROWTH AND JOBS FOR  
EUROPE



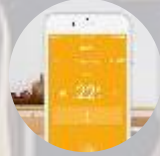
European Institute of  
Innovation & Technology

The EIT is a body of the European Union





# EMPOWERING INNOVATORS & ENTREPRENEURS ACROSS EUROPE





# THE EIT – UNIQUE INNOVATION INSTRUMENT

- Enhances Europe's **innovation capacity, competitiveness & quality of life**
- **Innovation ecosystems** to increase cooperation and integration between business, education and research
- Addresses **societal challenges**
- **Unique features:** pan-European, long-term (7-15 years), financial sustainability



Student to  
entrepreneur



Idea  
to  
product



Lab to  
customer

# EIT – AN INTEGRAL PART OF HORIZON 2020



- **The EIT contributes to H2020 by finding solutions to global challenges through creating a network of business, education & research**



- **The EIT will continue to work across H2020 and its different initiatives**





# EUROPE'S LARGEST INNOVATION COMMUNITY



# EIT COMMUNITY: CONNECTING THE DOTS



**GLOBAL CHALLENGES**

**ENTREPRENEURIAL EDUCATION**

**FINANCIAL SUSTAINABILITY**

**POLICY KNOWLEDGE**

**REGIONAL COOPERATION**

**RESEARCH**

**FINANCIAL LEVERAGING**

**MULTIPARTY COMMUNITIES**

**BUSINESS CREATION & ACCELERATION**

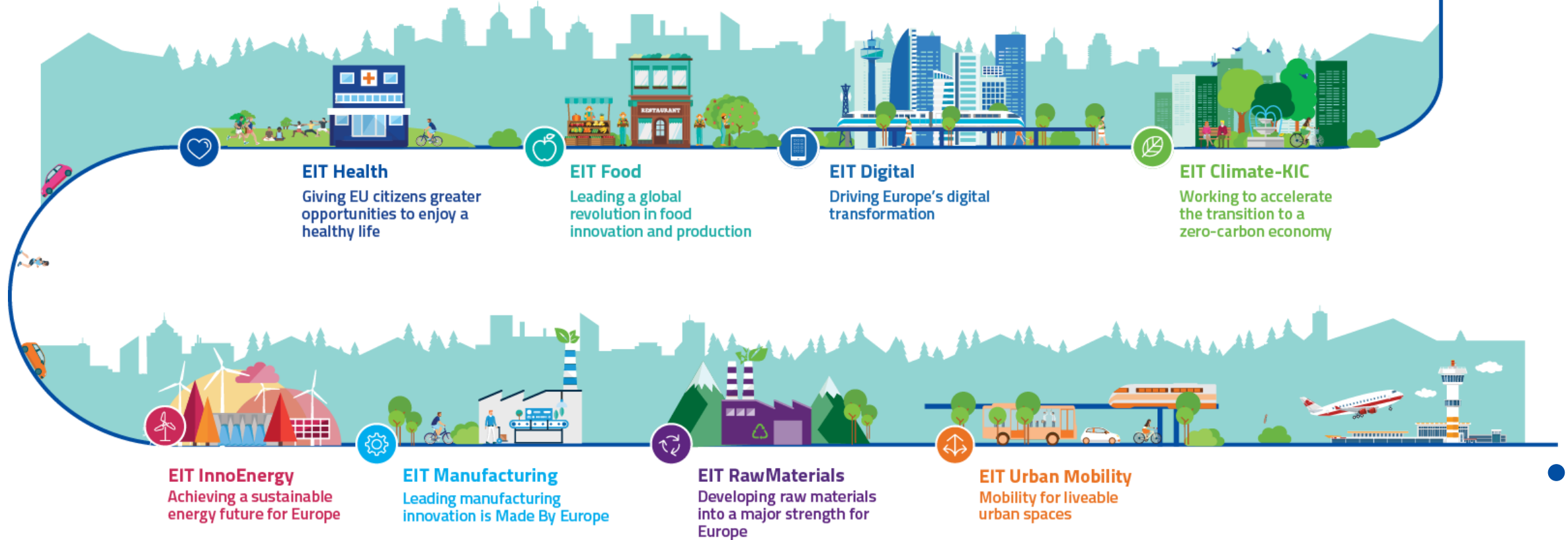
**#INNOVATIONMADEINEUROPE**

**EIT COMMUNITY COOPERATION**

**SME & SCALE-UP SUPPORT**



# EIT INNOVATION COMMUNITIES

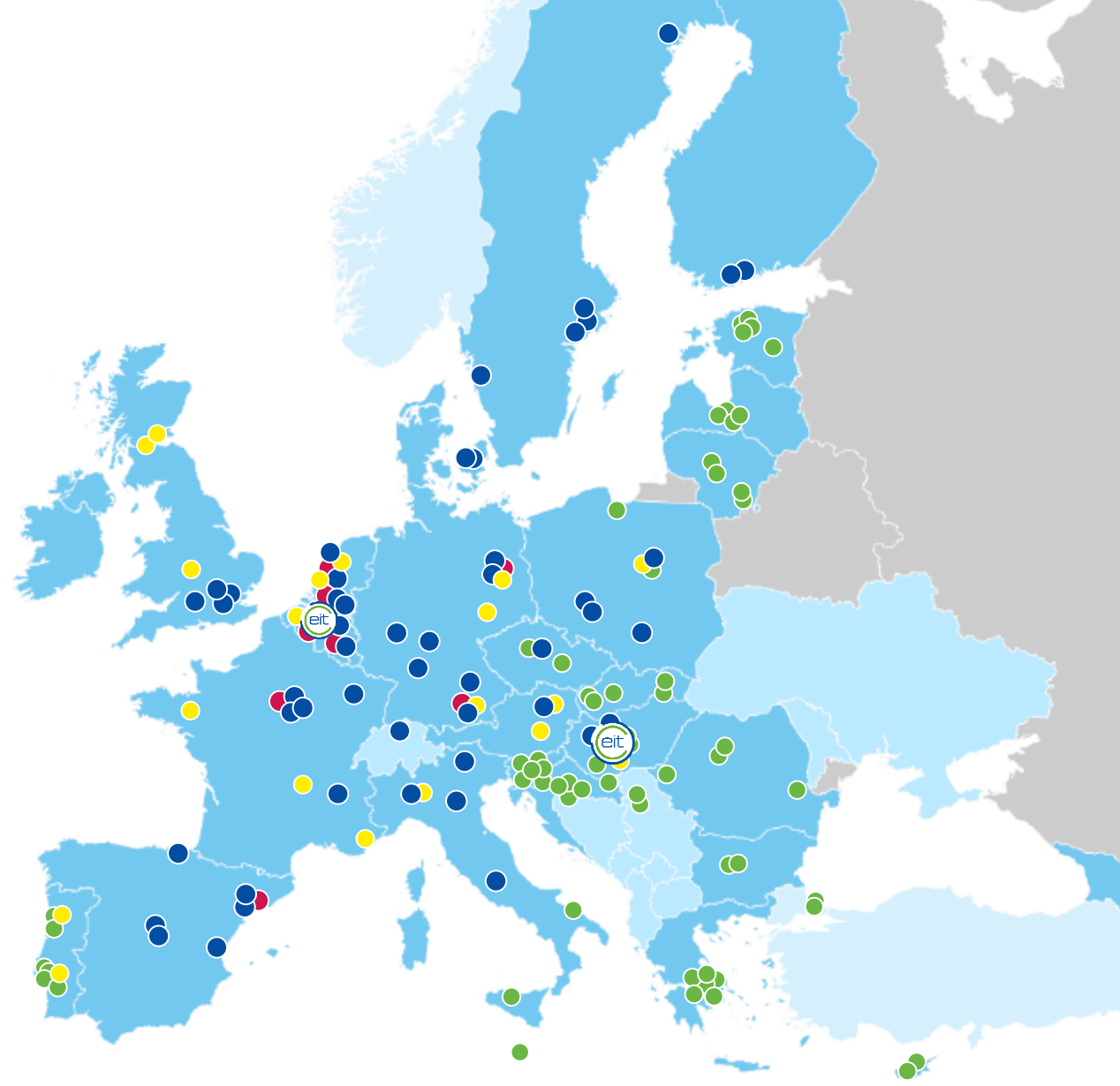




# EIT COMMUNITY ACROSS EUROPE

- Headquarters
- Innovation Hubs (Co-Location Centres)
- Offices

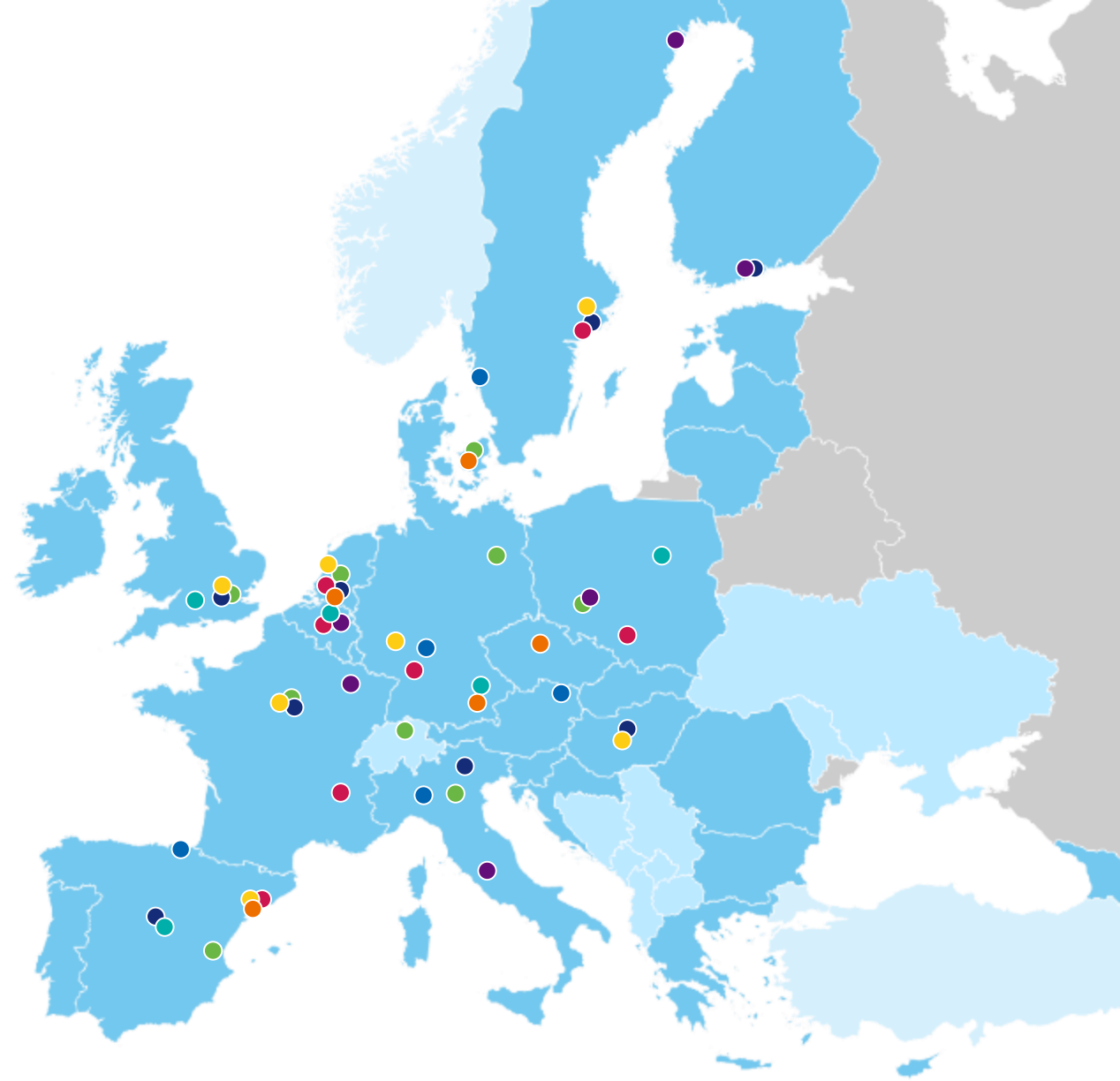
EIT Hubs under EIT Regional



# EIT INNOVATION HUBS ACROSS EUROPE

(Co-Location Centres)

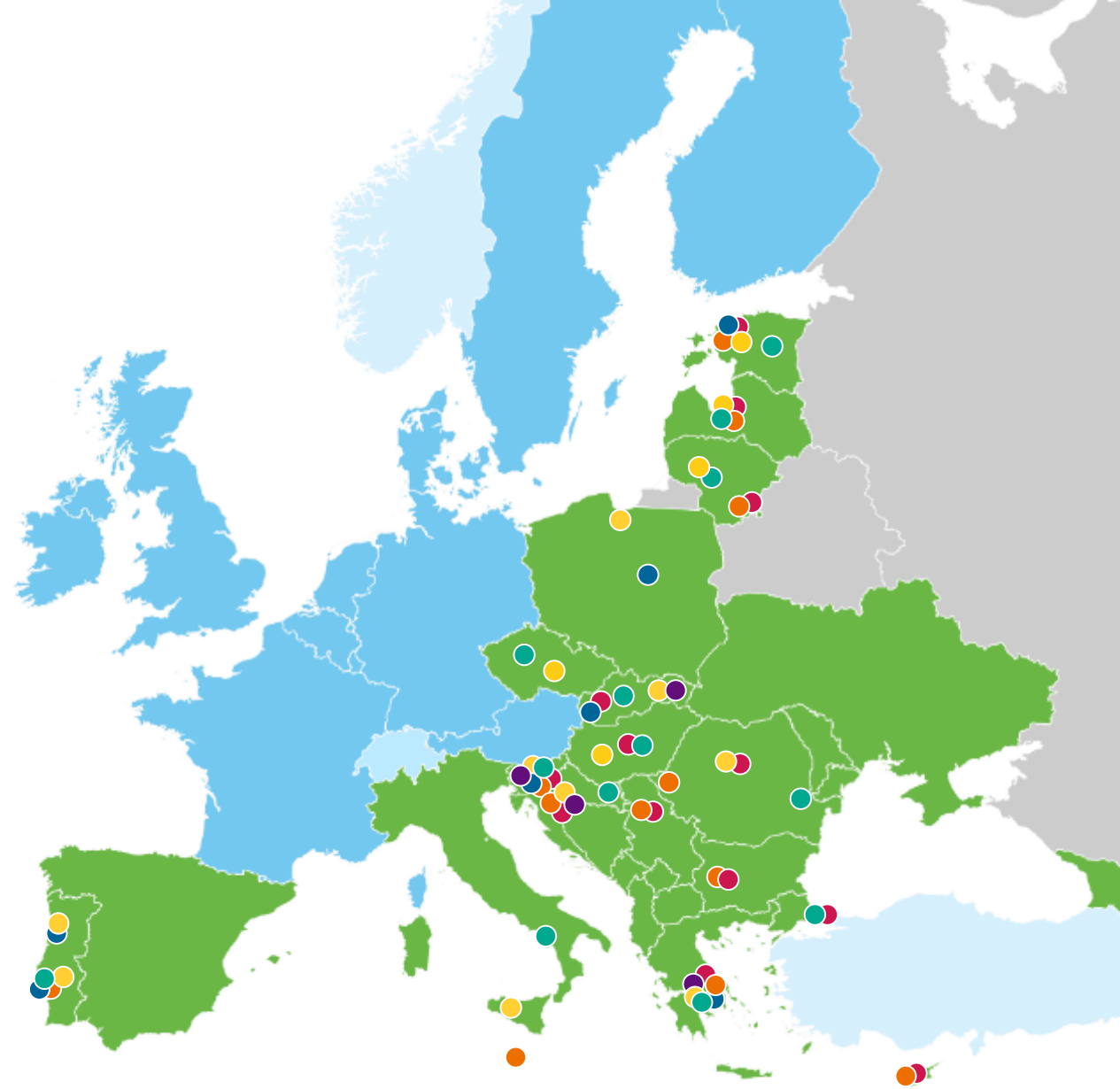
- EIT Climate-KIC
- EIT Digital
- EIT Food
- EIT Health
- EIT InnoEnergy
- EIT Manufacturing
- EIT RawMaterials
- EIT Urban  
Mobility





# EIT REGIONAL INNOVATION SCHEME HUBS

- EIT Climate-KIC
- EIT Digital
- EIT Food
- EIT Health
- EIT InnoEnergy
- EIT RawMaterials





From  
student to  
entrepreneur



From idea  
to product



From lab  
to customer



Driving  
innovation in  
Europe!



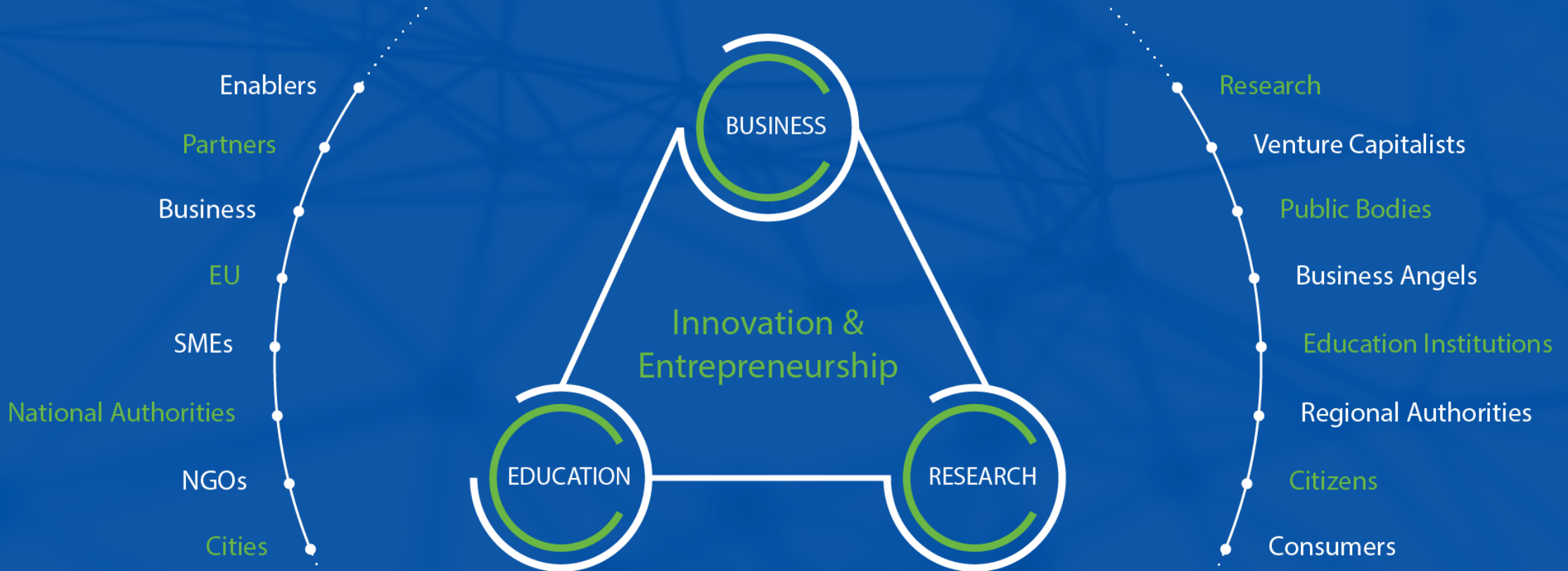
European Institute of  
Innovation & Technology

The EIT is a body of the European Union





# EIT INNOVATION MODEL



## EIT INNOVATION COMMUNITY MODEL

- **Independent legal entity:** gathering world-class partners
- **Autonomy & flexibility:** to determine organisational structure and activities
- **Long-term strategic approach:** set up for a minimum of 7 years to eventually become financially sustainable
- **Smart funding & high degree of partner commitment:** 25% - 75%
- **Effective governance:** run by a CEO and a lean management team
- **Innovation Hubs:** 5-8 per Innovation Community
- **Results & high impact oriented activities:** 7-year Strategy and Annual Business Plans



• **Culture:** strong entrepreneurial mind-sets at European and international levels

The EIT is a body of the European Union





# EIT EDUCATION

- **1. Master and doctoral programmes**
  - International cooperation, industry involvement
  - Training on specific skills and competences
  - Mobility, internships and scholarships/ fellowships
- **3. Executive training and post-doctoral courses**
- **4. Continuous professional development courses/ modules**
- **5. Learning modules and MOOCs; alumni and outreach activities**



Educating the next generation of entrepreneurs, innovators & change-makers

# EIT BUSINESS CREATION & ACCELERATION

- **EIT powered activities:**
  - **Tailored support for entrepreneurs:** business coaching & mentoring, access to market and customers, access to new technologies and testbeds, access to talent, access to finance...
  - **Sourcing start-ups and scale-ups:** venture and ideas competitions, referrals
  - **Venture support** within thematic specialisations of each Innovation Community



## Benefits for start-ups & scale-ups:

- Market orientation
- Shorter time-to-market
- Access to Europe's largest innovation network
- Proximity to finance sources







## INNOVATION DRIVEN RESEARCH PROJECTS

### EIT powered activities:

- Focus on commercialisation
- Facilitation of co-creation and cooperation
- Linking innovation players from different innovation ecosystems
- Adaptive and responsive to market and social trends

Transdisciplinary & multicultural teams working together on solutions to global challenges

New products, services, processes & business models for Europe



# EIT REGIONAL INNOVATION SCHEME (EIT RIS)

- **Objective**

- Increase the ability to innovate in countries and regions across Europe that are **modest and moderate\*** innovators

- **Approach**

- Share and transfer good practices to widen participation in EIT Community activities
- Allow for cooperation in regions and countries that have been designing **Smart Specialisation Strategies**

\* European Innovation Scoreboard



# EIT RESULTS

Europe's tried, tested and proven innovation engine



**50+**  
Innovation  
Hubs across  
Europe



**2 000+**  
Ventures  
supported



**1.5B€**  
Investment  
raised  
by EIT  
ventures



**6 100+**  
Jobs  
created



**900+**  
New products  
and services



**2 300+**  
Graduates  
completing  
programmes  
EIT

\*figures September  
2019





European Institute of  
Innovation & Technology

# WHAT CAN THE EIT COMMUNITY DO FOR YOU?



The EIT is a body of the European Union





# OPPORTUNITIES FOR ALL INNOVATORS!



## BUSINESS

Access exceptional talent, innovation know-how and new market opportunities



## ENTREPRENEURS

Start a new venture, improve your competitiveness, and find commercial success



## PUBLIC AUTHORITIES

Leverage Europe's investment in innovation and shape Europe's future towards more sustainable, inclusive and smart growth



## UNIVERSITIES

Be part of the movement that enables innovation and creates a more favourable environment for cross-sectorial and cross-border cooperation



## STUDENTS

Unleash your innovation potential by combining technical studies with entrepreneurial skills in unique EIT programmes



## RESEARCHERS

Get your ideas off the ground, bring great ideas to life, and take your innovation to the market

eit.europa.eu



EITnews



EIT



European Institute of  
Innovation & Technology



EITeu



eiteu

The EIT is a body of the European Union





# EIT Manufacturing

## Making Innovation happen!



# EIT Manufacturing

## A strong and unique Partnership

- Coverage of the entire value chain and the whole product life cycle
- Cross-fertilization
- World class shared facilities
- Outreach to 70,000 SMEs
- Industry-driven Education
- 17 core partners from RIS countries

### 49% Industry

**Electronics and Digital**

Atos | evi | SIEMENS

**Automotive**

VW | Magna | bremba | MAGNA

**Robotics**

OMALI | KUKA

**Aerospace**

ITP Aero | AvioAero | AERnova | aerospace valley

**Machinery & Equipment**

PRIMA INDUSTRIE | FESTO | SPINRA | SANDVIK | fives

Ultimaker | LINPRA

**Consumers Goods, Medical Equipment and Process Industries**

ANVELL GROUP | stryker | Whirlpool | ArcelorMittal | SOGAE

### 32% Universities

ARTS ET MÉTIERS ParisTech | SUPSI | PW TU GALLARATE

CENTRALE NANTES | CHALMERS UNIVERSITY OF TECHNOLOGY

Grenoble INP | UCB | TU Delft

LMS | POLITECNICO MILANO | A! RWTH AACHEN

STU | CTU | TU WIEN

TECHNISCHE UNIVERSITÄT WIEN | UNIVERSITÄT ZÜRICH

Technische Universität Braunschweig

### 19% RTOs

IK4 | TWI

RISE | INNOVATION LADYFIRE | INNOVATION SUPPORTS

cea | BIBA

INESCTEC

tecnalia

DFK | DEUTSCHES FORSCHUNGSZENTRUM FÜR KUNSTSTOFFE

JOANNEUM RESEARCH



Innovate with us!



# EIT Manufacturing

## Strategic Agenda

### **Our vision**

Global manufacturing innovation is led by Europe.

### **Our mission**

Bring the manufacturing actors of Europe together in innovation ecosystems that add unique value to European products, processes, and services, while inspiring the creation of globally competitive and sustainable manufacturing.

# EIT Manufacturing

## Strategic Agenda

### Our program portfolio: A knowledge triangle-based approach

- Education
- Innovation
- Business Creation

### Unique initiatives / paradigms

- Teaching/Learning Factories, Guided Learning Platform
- Innovation hotspots, European Manufacturing Innovation Platform
- Gazelle Factory





# EIT Manufacturing

## Strategic Agenda

### Our Flagships

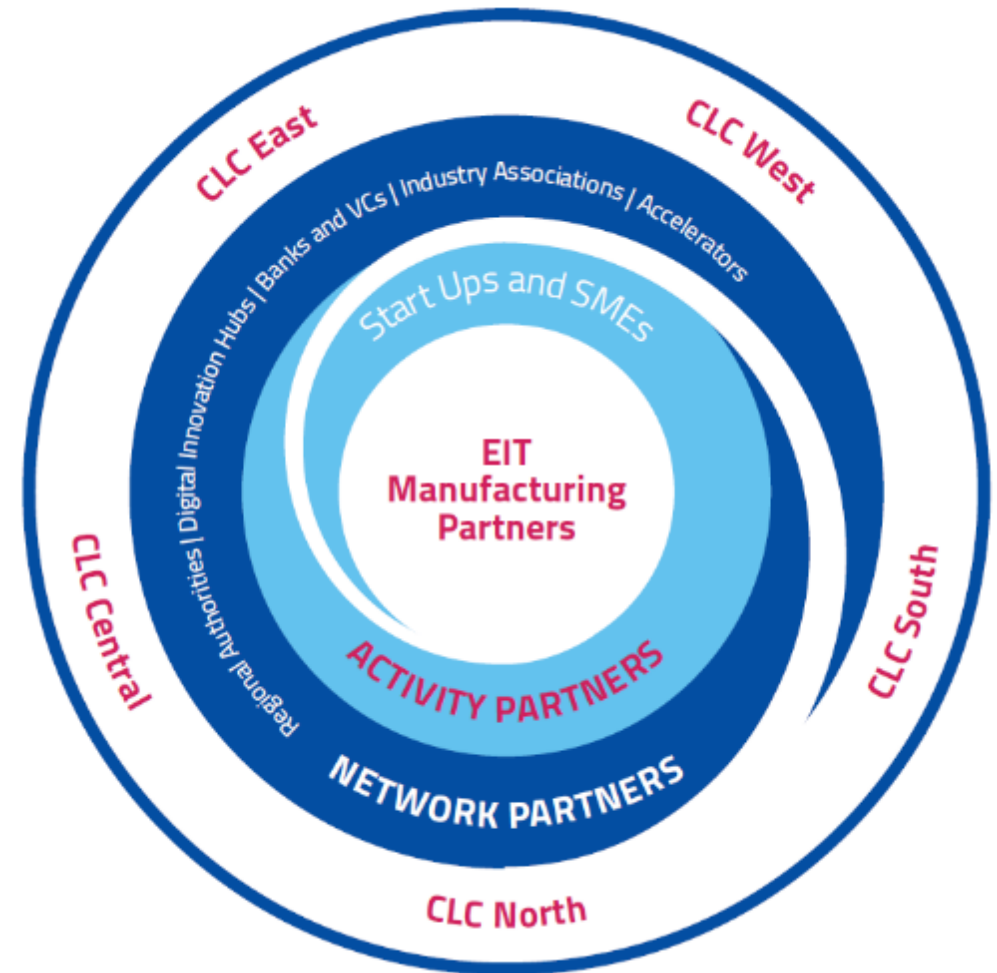
- People and Robots for Sustainable Work
- Additive Manufacturing for Full Flexibility
- Zero-waste Manufacturing and Circular Economy
- Platforms for Digitalised and Value networks



# EIT Manufacturing

We build an ecosystem for change!

- Partners with a global reach
- Activity partners like Start-ups and SMEs through our dynamic SME model
- Network of facilitators
- World class shared facilities





# EIT Manufacturing

## MEMBERS

- Formal accession process
- Annual membership fee
- Full voting right in the general assembly of the EIT Manufacturing association

INDUSTRIAL ENTERPRISES,  
RTOs, UNIVERSITIES

## ACTIVITY PARTNERS

- Participation on activity basis
- Reduced membership fee; no financial obligations at the end of the activity
- No voting right in the general assembly

SME / START-UPS

## NETWORK PARTNERS

- Accession via Management Team
- Representation in EIT Manufacturing advisory councils
- No formal member of EIT Manufacturing association

ASSOCIATIONS /  
INCUBATORS / POLITICS / FINANCE  
/ NGOs / INNOVATION HUBS



[eitmanufacturing.eu](http://eitmanufacturing.eu)



EIT Manufacturing is supported by the EIT,  
a body of the European Union